

BASRAH RETURNEE/IDP MONITORING: GRAPH REPORT

Prepared on 14 March 2007

Based on data gathered by the implementing partners of UNHCR in 2004-2005

Figure 1: Country of Displacement, from Household Surveys

(Sample of 1,568 households which indicated their country of displacement)

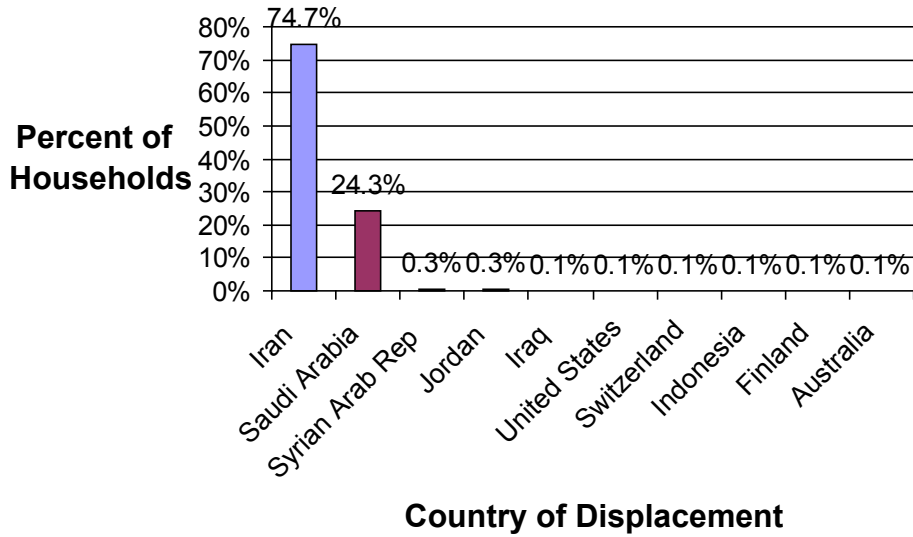


Figure 2: Return into Continued Displacement, based on Household Surveys

(Sample of 1,566 households which indicated their place of return)

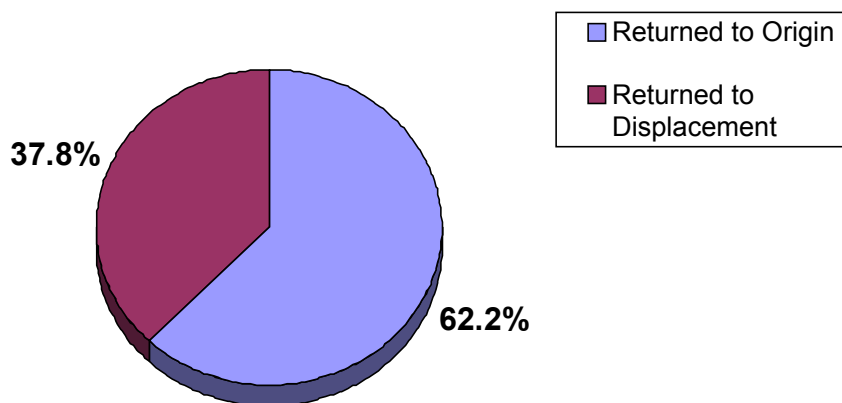


Figure 3: Types of Returnees and IDPs, from Household Surveys

(Sample of 2,027 households which indicated their origin and intentions)

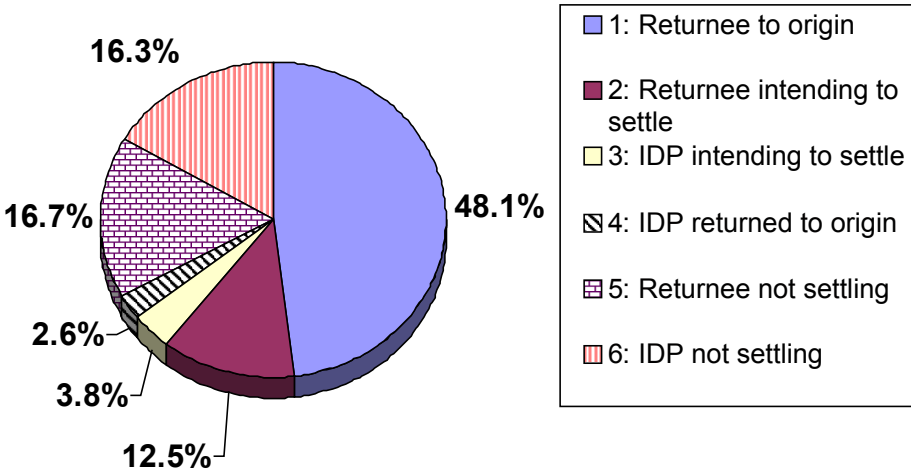


Figure 4: Why Not Returned to Origin, from Household Surveys

(Sample of 1,000 households which indicated their reasons for not returning to their place of origin. The values do not add up to 100% because households can list more than one reason.)

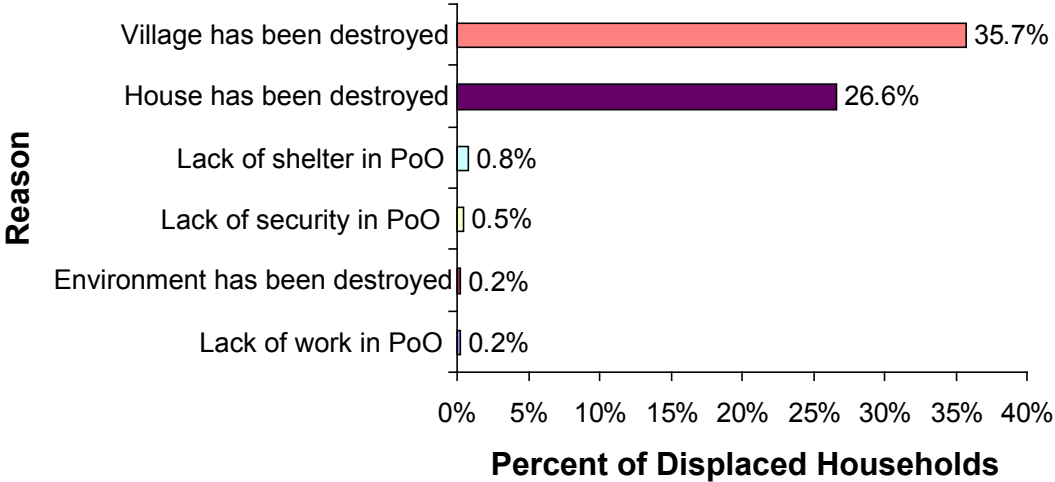


Figure 5: Age Range of Monitored Returnee/IDP Households, from Household Surveys

(Sample of 1,973 households which indicated their age range)

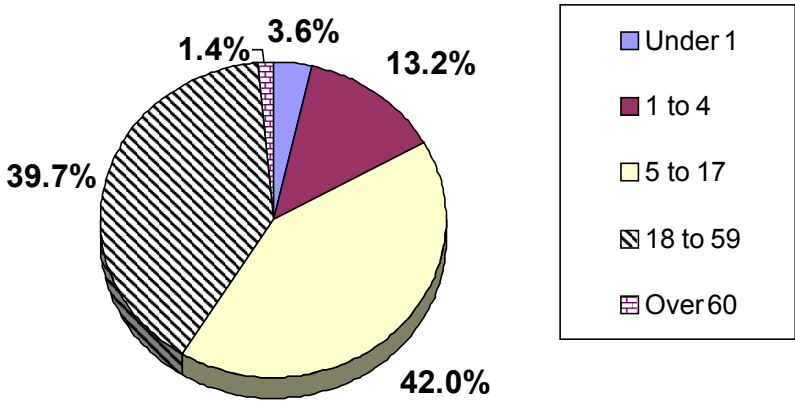


Figure 6: Gender of Returnee/IDP Family Members, from Household Surveys

(Sample of 1,951 households which indicated their family members' genders)

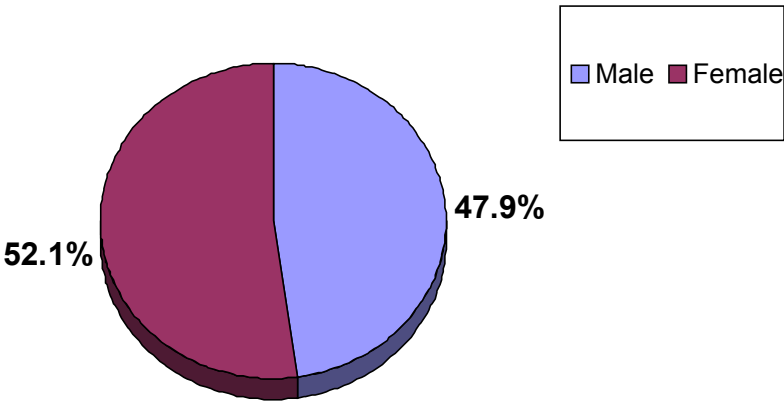


Figure 7: Reasons for Leaving, based on Household Surveys

(Sample of 2,014 households which indicated their reason for leaving their former place of residence. The values do not add up to 100% because households listed up to three reasons for leaving.)

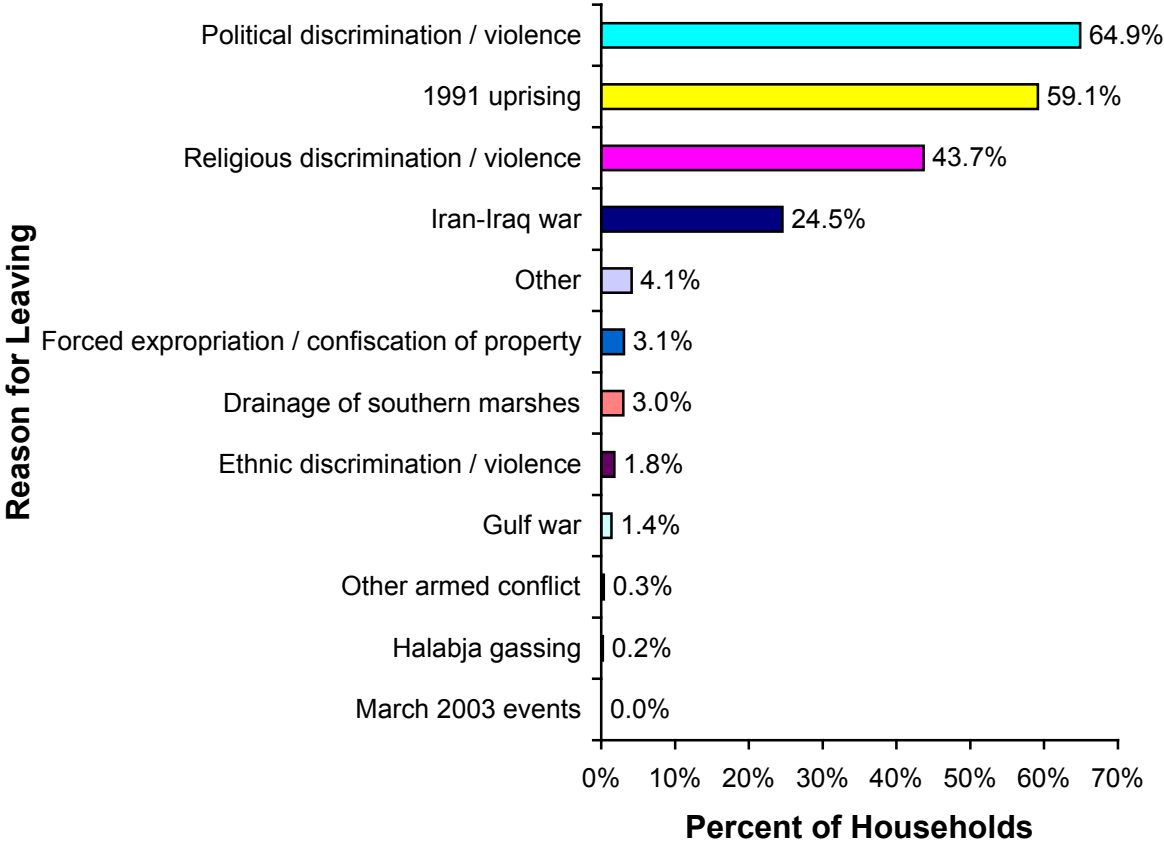


Figure 8: Reasons for Return to Iraq, based on Household Surveys

(Sample of 1,610 households which indicated their reasons for return to Iraq. The values do not add up to 100% because households listed up to three reasons for returning.)

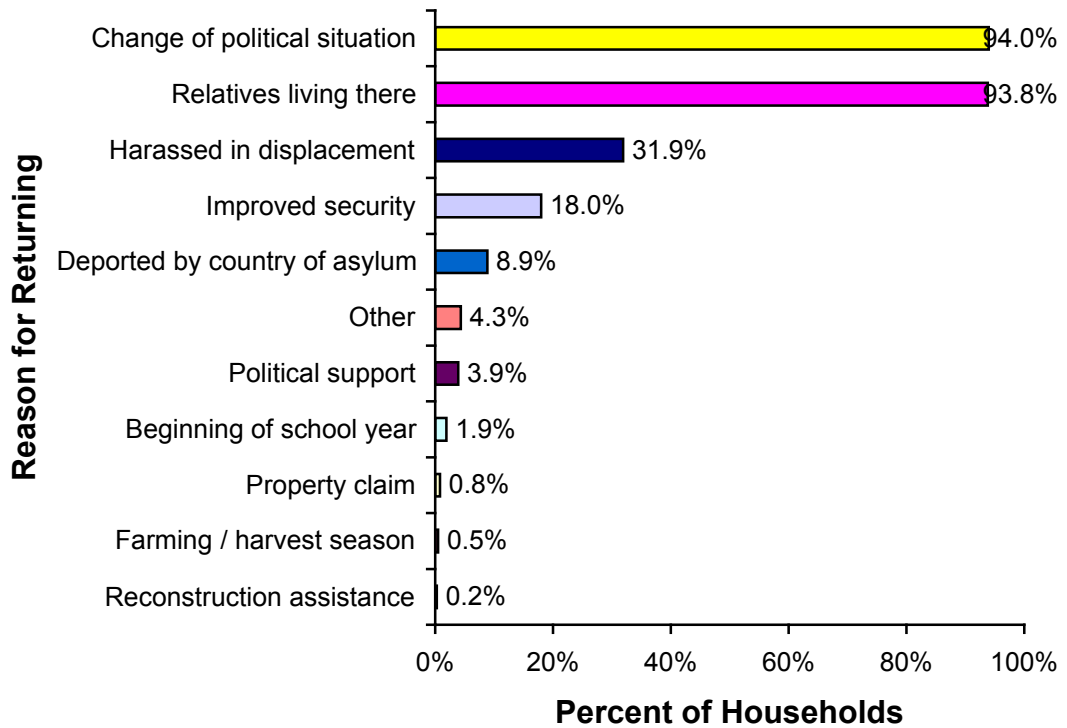


Figure 9: Year of Return to Iraq, based on Household Surveys

(Sample of 1,581 households which indicated their year of return)

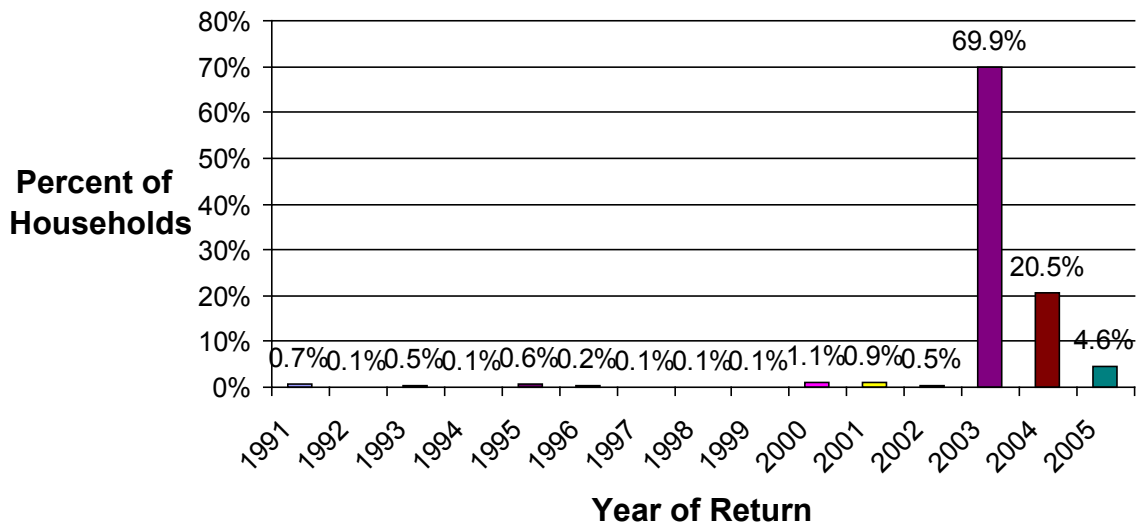


Figure 10: Type of Accommodation, from Household Surveys

(Sample of 1,998 households which indicated their housing type)

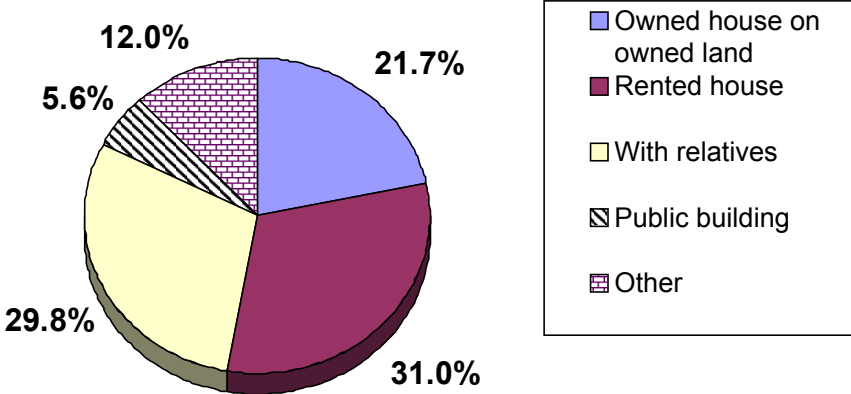


Figure 11: Condition of Housing for Returnees/IDPs, based on Household Surveys

(Sample of 2,016 households which indicated their housing condition)

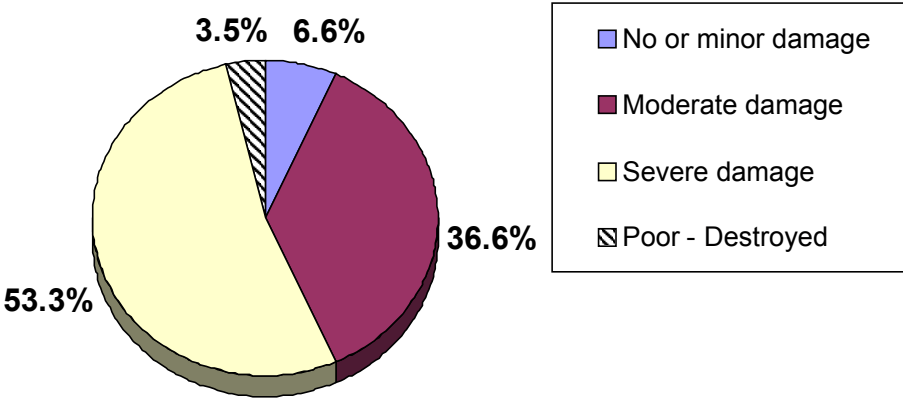


Figure 12: Households with Access to Health Facilities, from Household Surveys

(Sample of 1,986 households)

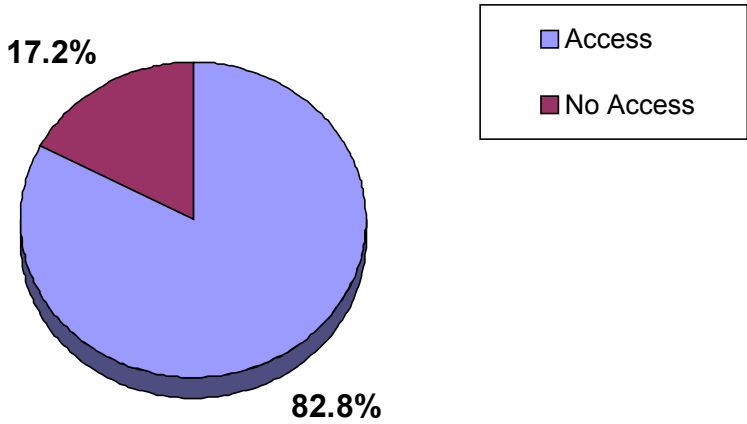


Figure 13: Reasons for No Access to Health Facilities, from Household Surveys

(Sample of 351 households which indicated that they had no access to health facilities. The values do not add up to 100% because not all households provided the reason for lack of access.)

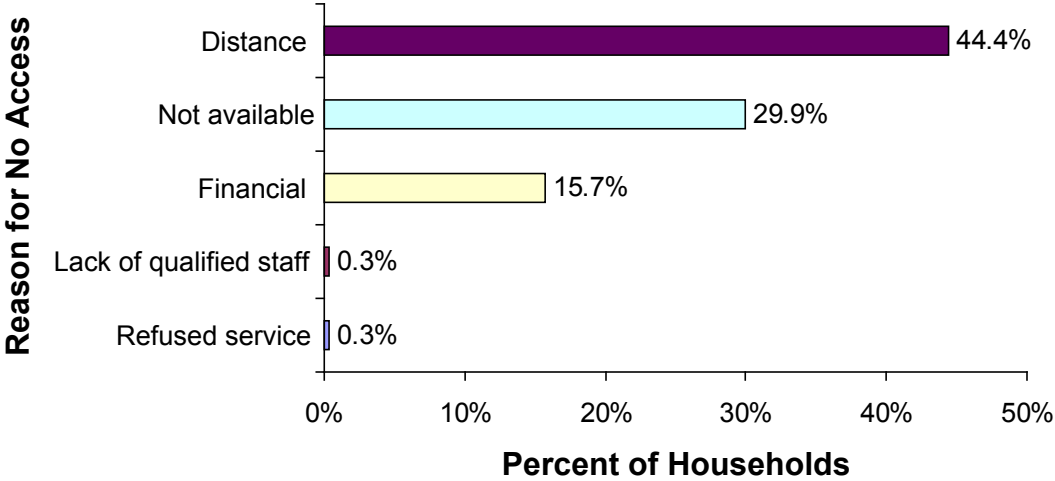


Figure 14: Reasons for Not Attending School, from Household Surveys

(Sample of 184 households which gave reasons for not attending school)

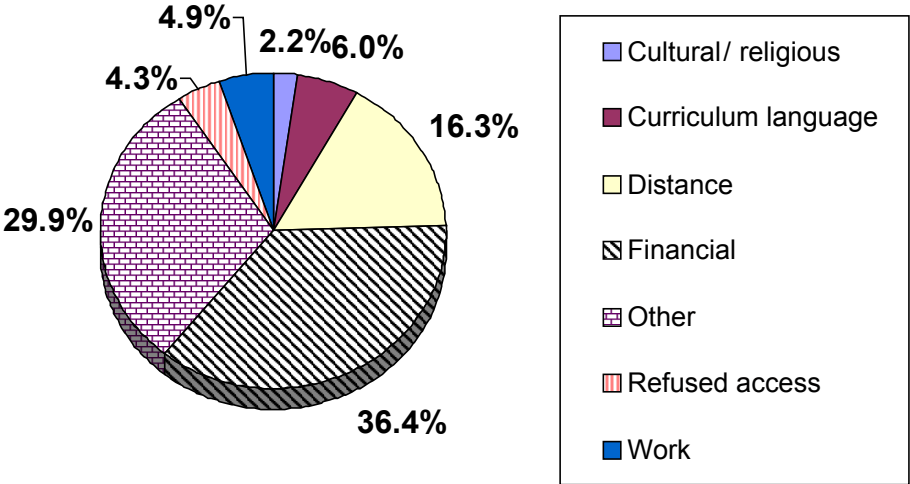


Figure 15: Documents that Monitored Returnees/IDPs had Trouble Renewing, from Household Surveys

(Sample of 1,986 households)

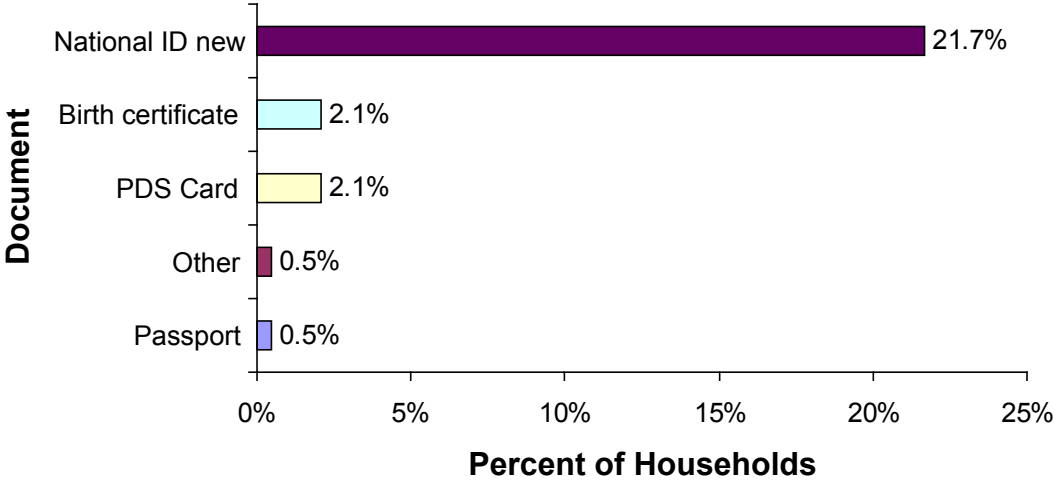


Figure 16: Special Needs of Returnee/IDP Households, based on Household Surveys
 (Sample of 2,037 households)

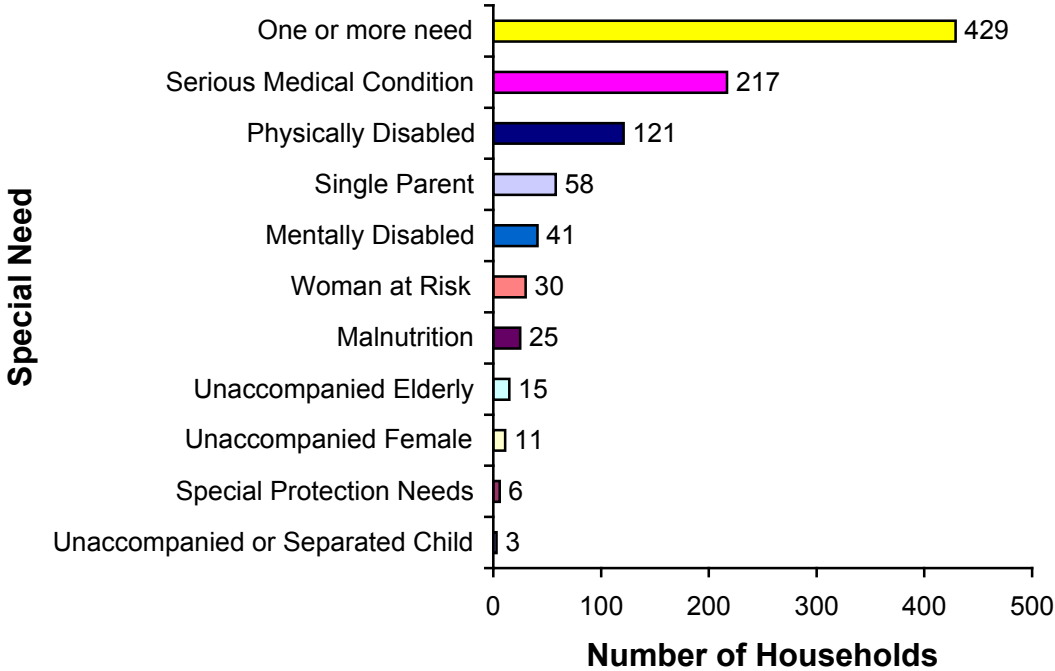


Figure 17: Main Sources of Income, from Household Surveys
 (Sample of 1,761 households which indicated their main sources of income)

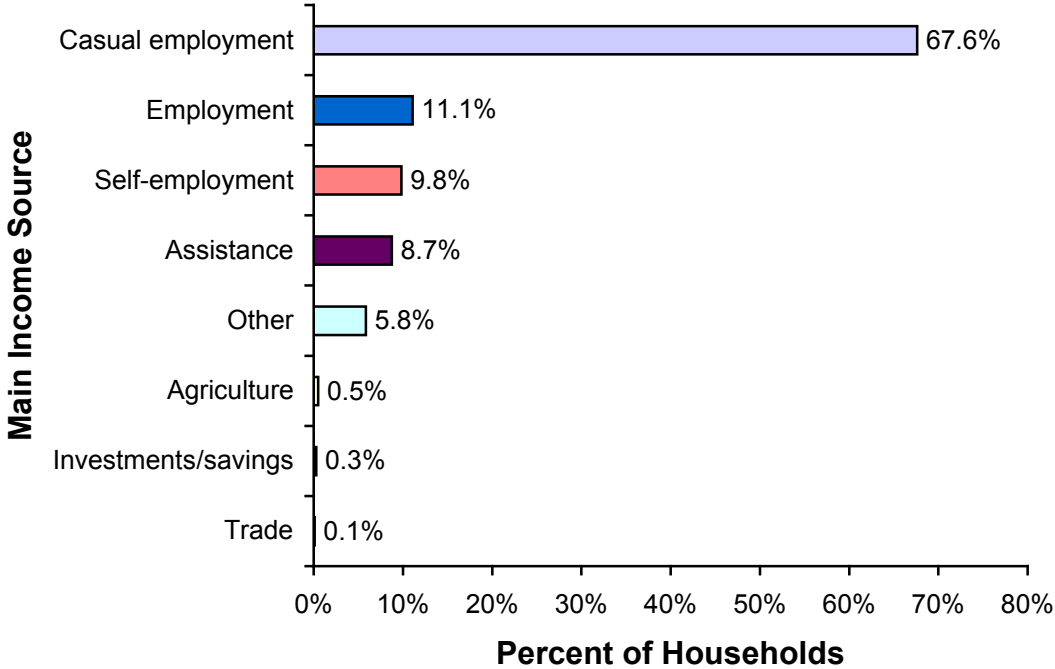


Figure 18: Top Three Priorities of Returnee/IDP Households, from Household Surveys

(Sample of 2,002 households which indicated their top three priorities. The values do not add up to 100% because households listed up to three priorities for assistance.)

