

MISSAN RETURNEE/IDP MONITORING: GRAPH REPORT

Prepared on 14 March 2007

Based on data gathered by the implementing partners of UNHCR in 2004-2005

Figure 1: Country of Displacement, from Household Surveys

(Sample of 2,801 households which indicated their country of displacement)

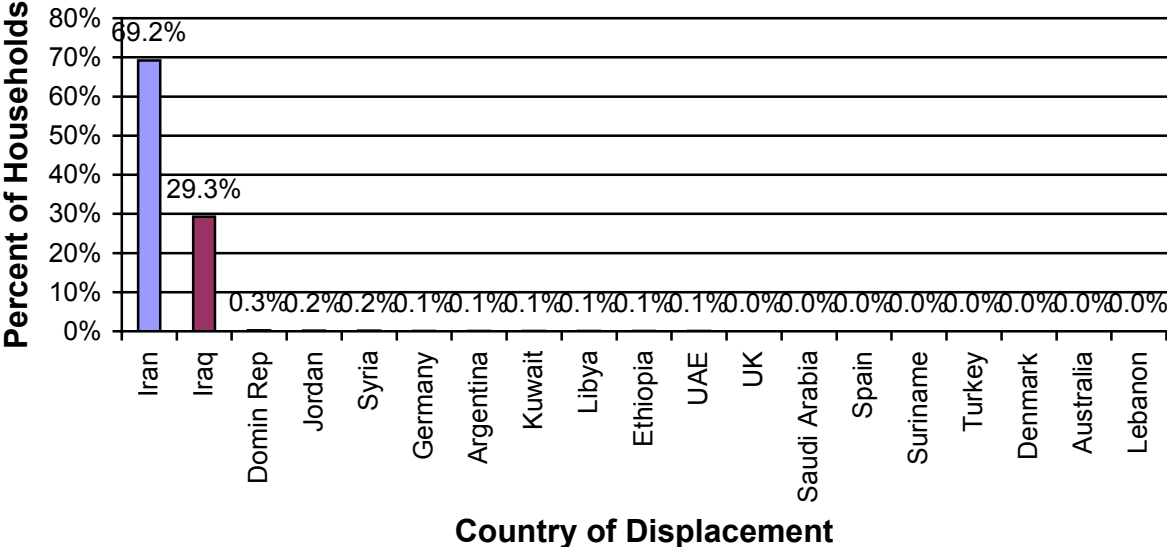


Figure 2: Return into Continued Displacement, based on Household Surveys

(Sample of 2,116 households which indicated their place of return)

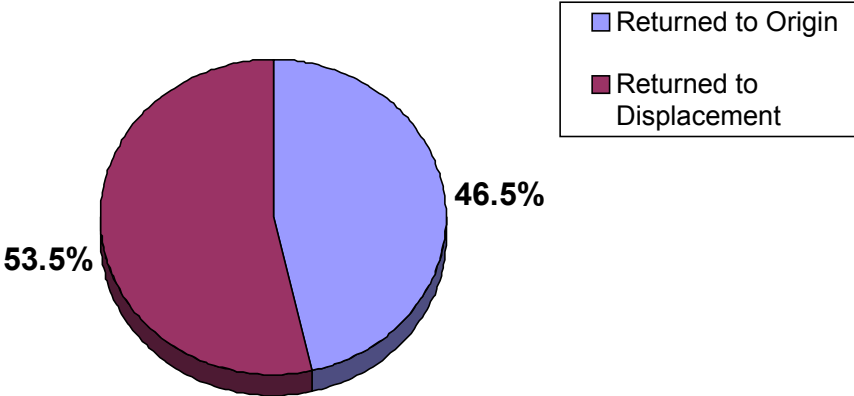


Figure 3: Types of Returnees and IDPs, from Household Surveys

(Sample of 4,277 households which indicated their origin and intentions)

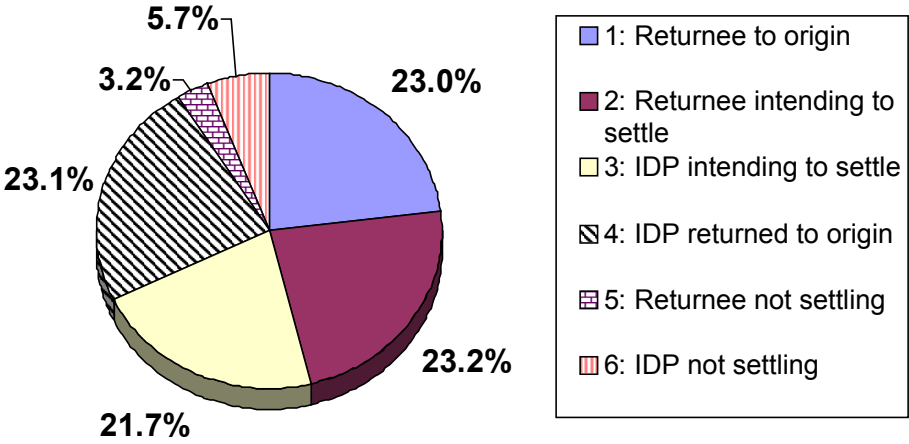


Figure 4: Why Not Returned to Origin, from Household Surveys

(Sample of 2,304 households which indicated their reasons for not returning to their place of origin. The values do not add up to 100% because households can list more than one reason.)

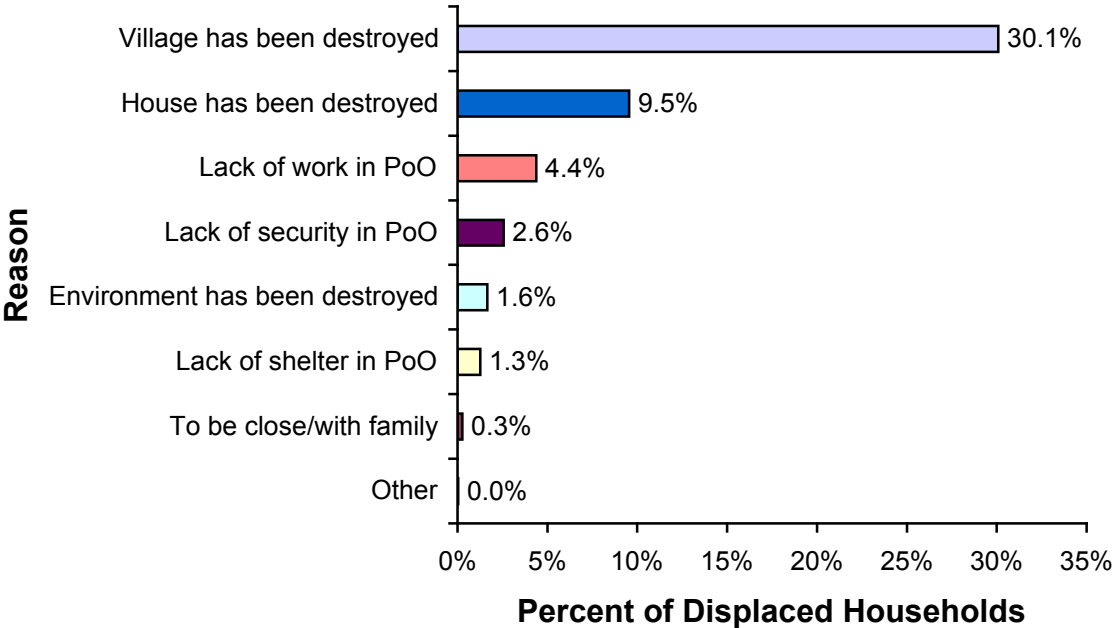


Figure 5: Age Range of Monitored Returnee/IDP Households, from Household Surveys
(Sample of 4,579 households which indicated their age range)

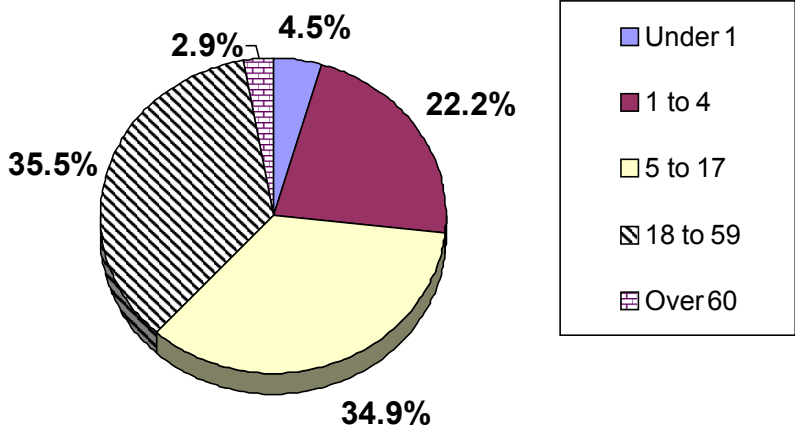


Figure 6: Gender of Returnee/IDP Family Members, from Household Surveys
(Sample of 4,659 households which indicated their family members' genders)

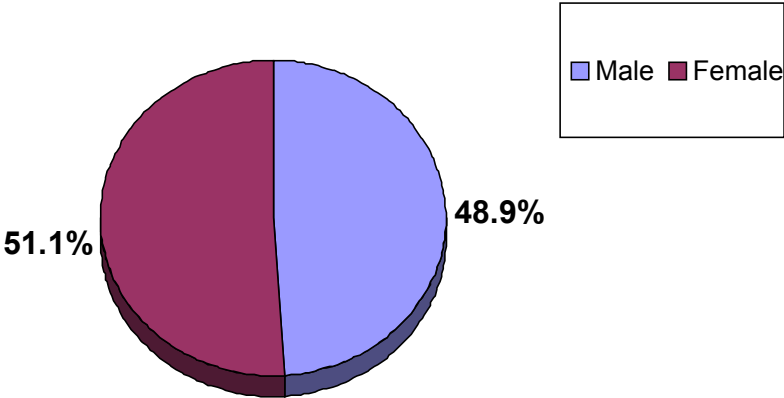


Figure 7: Reasons for Leaving, based on Household Surveys

(Sample of 4,261 households which indicated their reason for leaving their former place of residence. The values do not add up to 100% because households listed up to three reasons for leaving.)

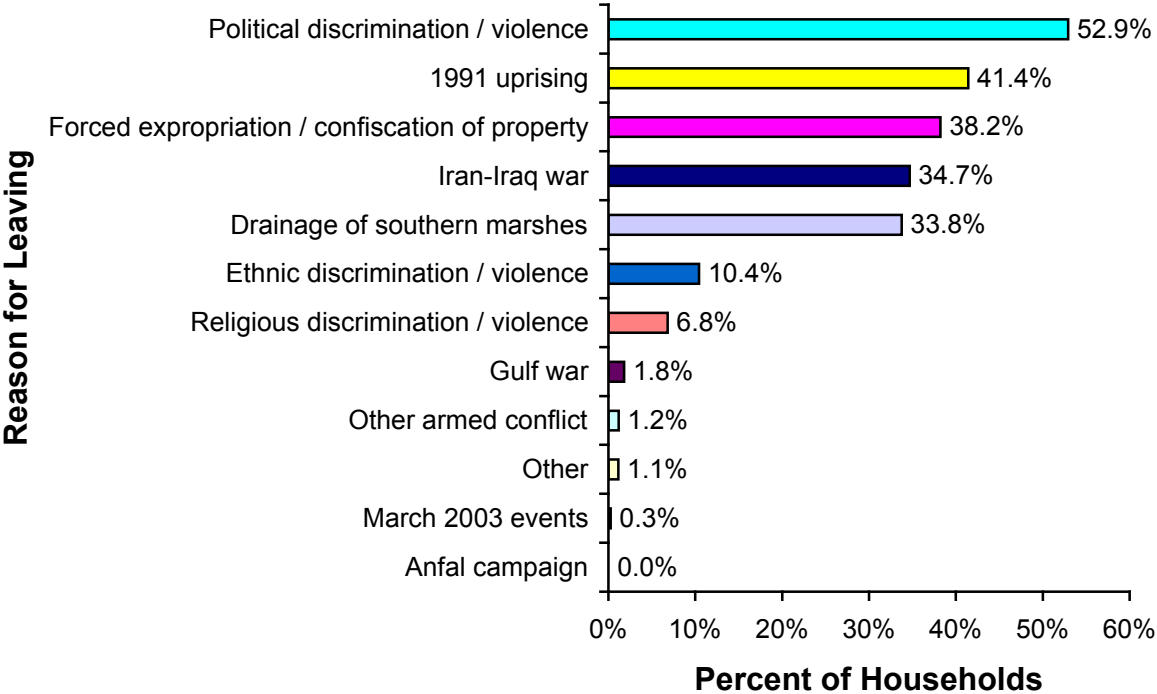


Figure 8: Reasons for Return to Iraq, based on Household Surveys

(Sample of 3,137 households which indicated their reasons for return to Iraq. The values do not add up to 100% because households listed up to three reasons for returning.)

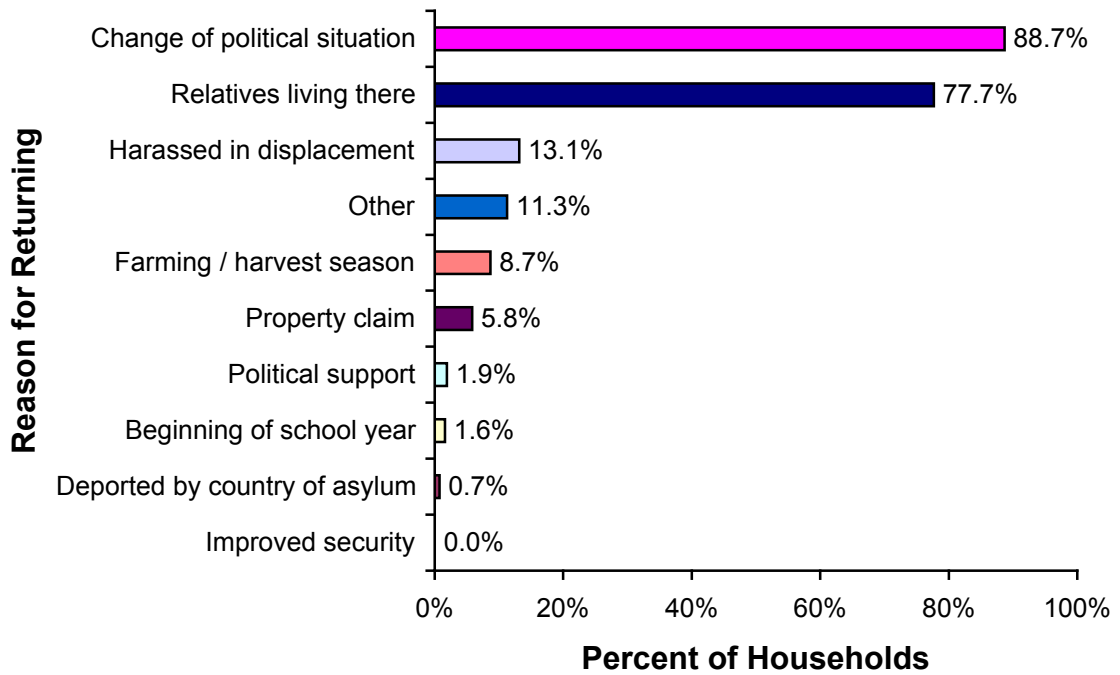


Figure 9: Year of Return to Iraq, based on Household Surveys

(Sample of 2,710 households which indicated their year of return)

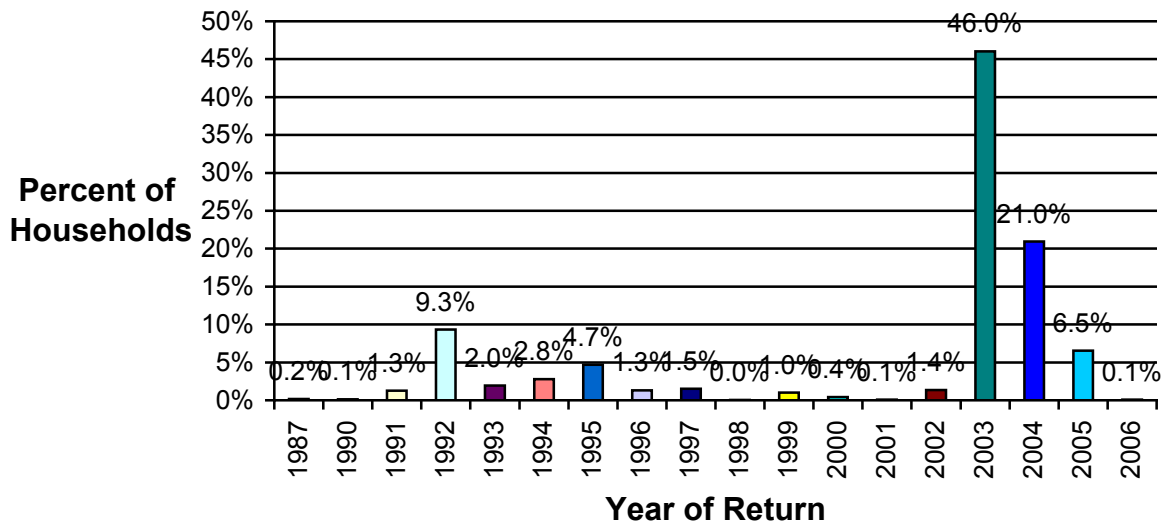


Figure 10: Type of Accommodation, from Household Surveys

(Sample of 6,645 households which indicated their housing type)

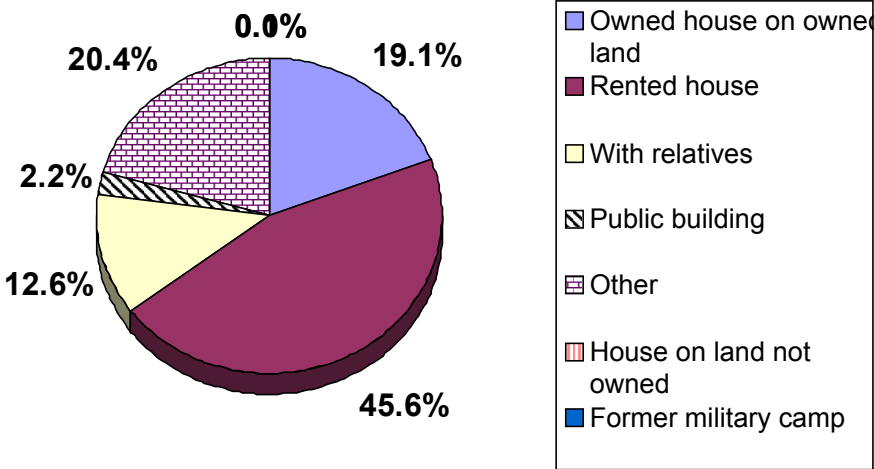


Figure 11: Condition of Housing for Returnees/IDPs, based on Household Surveys

(Sample of 4,243 households which indicated their housing condition)

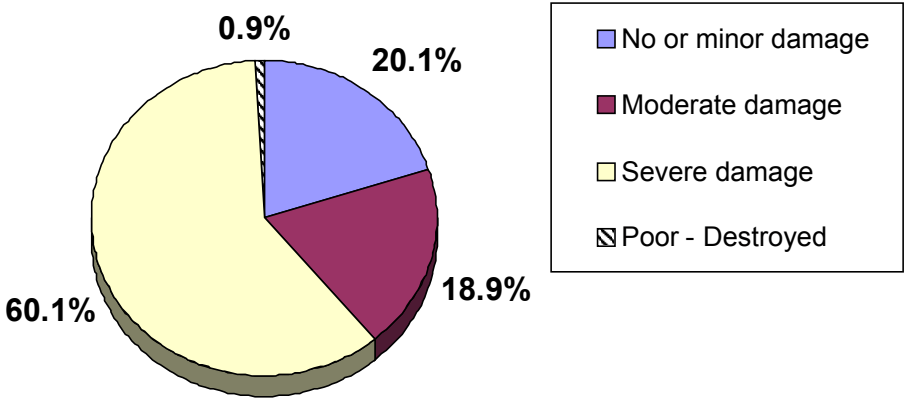


Figure 12: Households with Access to Health Facilities, from Household Surveys

(Sample of 4,268 households)

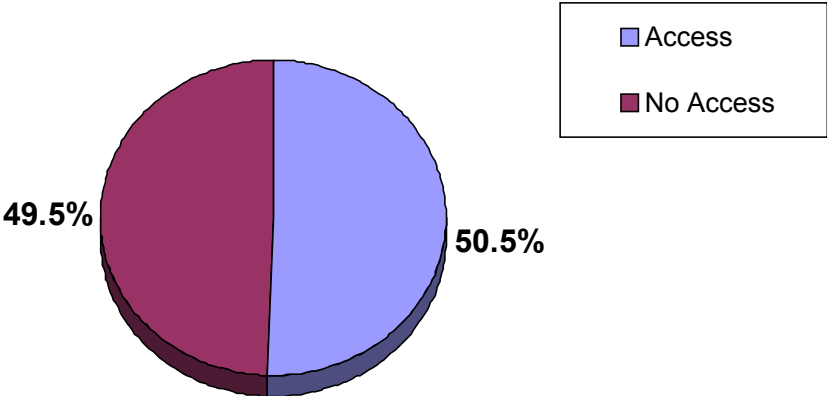


Figure 13: Reasons for No Access to Health Facilities, from Household Surveys

(Sample of 2,131 households which indicated that they had no access to health facilities. The values do not add up to 100% because not all households provided the reason for lack of access.)

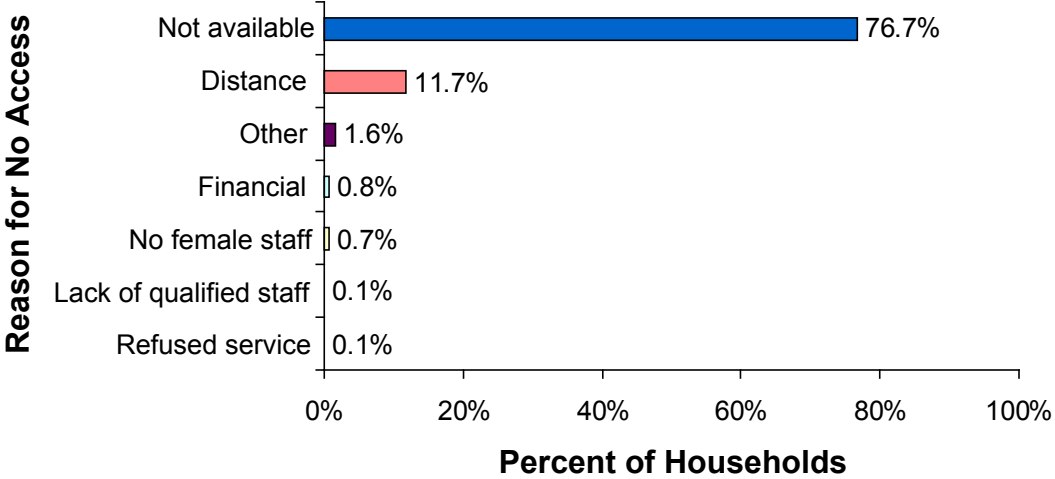


Figure 14: Reasons for Not Attending School, from Household Surveys

(Sample of 1,264 households which gave reasons for not attending school)

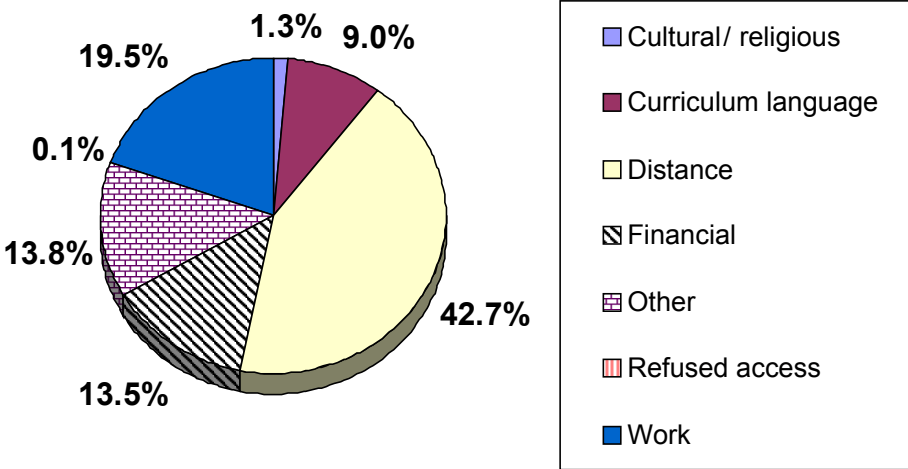


Figure 15: Documents that Monitored Returnees/IDPs had Trouble Renewing, from Household Surveys

(Sample of 4,268 households)

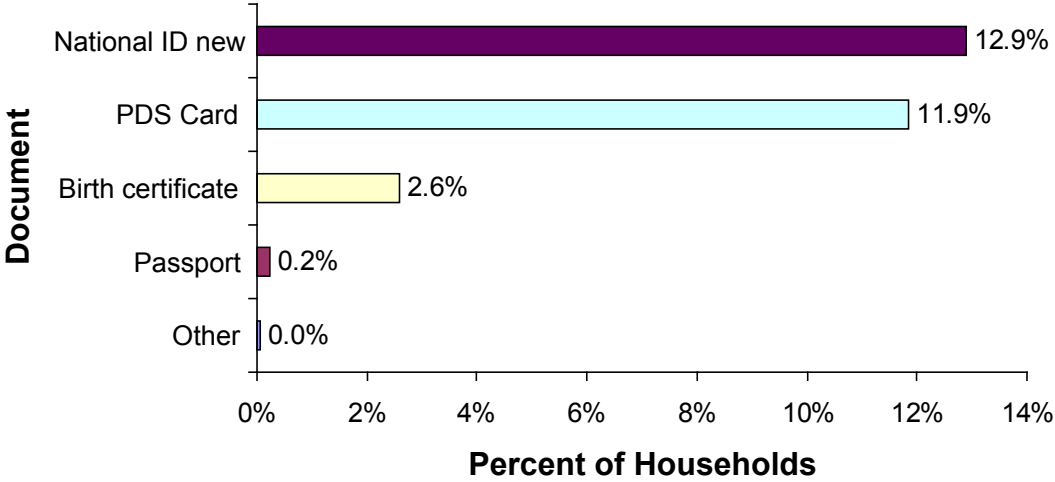


Figure 16: Special Needs of Returnee/IDP Households, based on Household Surveys

(Sample of 4,303 households)

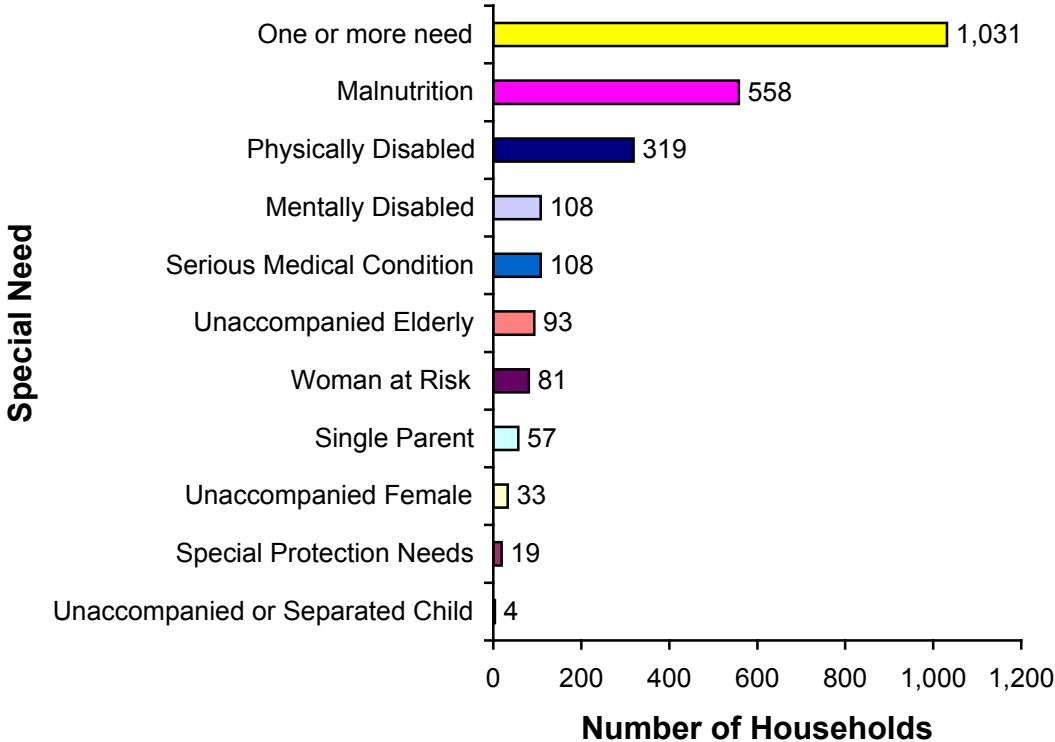


Figure 17: Main Sources of Income, from Household Surveys

(Sample of 4,022 households which indicated their main sources of income)

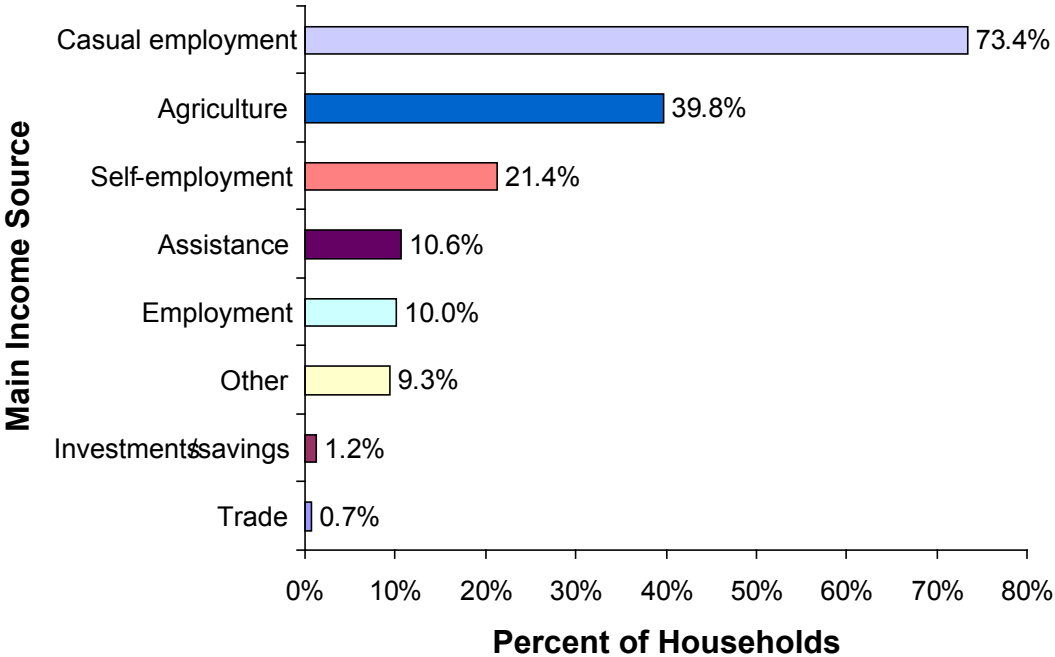


Figure 18: Top Three Priorities of Returnee/IDP Households, from Household Surveys

(Sample of 4,088 households which indicated their top three priorities. The values do not add up to 100% because households listed up to three priorities for assistance.)

